

## COMMUNITY PROFILE

### CONTENTS:

Population	1
Property Tax Rate	1
Housing	2
Income and Education	2
Labor Force	3
Transportation	3
Parks and Recreation	4
Community Facilities	4



Welcome to McHenry!

### Current estimated populations:

Illinois: 12,852,548

McHenry County: 318,641

City of McHenry: 28,160

The state of Illinois is 55,584 square miles. McHenry County is 604 square miles. The City of McHenry is approximately 13 square miles.

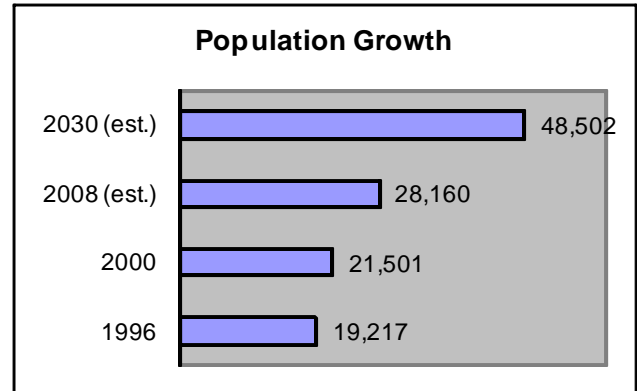
### Total Assessed Valuation

Year	Total EAV	Change %
2003	\$568,108,099	+9.6%
2004	\$615,308,466	+8.3%
2005	\$688,546,159	+11.9%
2006	\$769,212,014	+11.7%
2007	\$776,708,475	+9.74%
2008	\$873,829,291	+4.4%

## POPULATION

### Population Growth

Year	Total Population
1980	13,536
1990	16,117
1993	18,180
1996	19,217
2000	21,501
2004	24,493
2008 (est.)	28,160
2030 (est.)	48,502



City of McHenry Population - 1996-2030

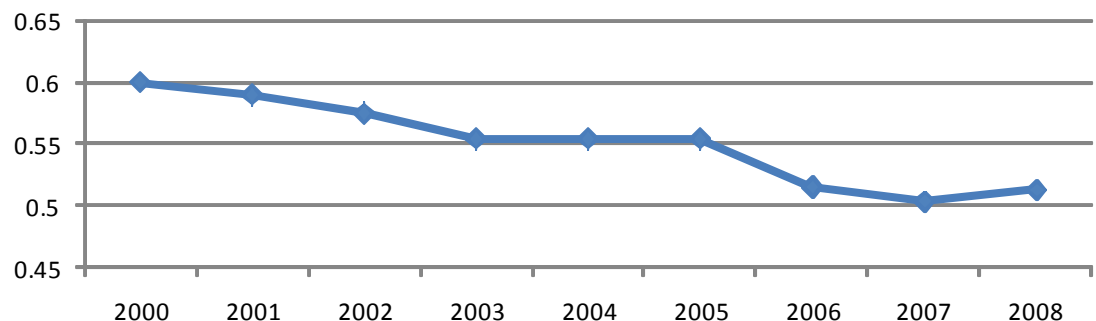
### Age Classifications (2000)

Age Group	Total Population	%
Under 15	5,151	24%
15-19	1,496	7%
20-24	1,168	5.4%
25-34	3,211	14.9%
35-44	3,828	17.8%
45-54	2,778	12.9%
55-64	1,502	7%
65 and Over	2,367	11%
<b>Total</b>	<b>21,501</b>	<b>100%</b>

### Racial Classifications (2000)

Race	Total Population	%
White	20,250	94.2%
Black	75	0.3%
American Indian, Alaska Native	45	0.2%
Asian/Hawaiian	200	0.9%
Other Race	711	3.3%
Hispanic Origin Of Any Race	1,527	7.1%

## PROPERTY TAX RATE



City of McHenry Property Tax Rate - 2000-2008



Single Family Housing, Martin Woods

Housing Info:

- The average sale price of a single-family home in McHenry in 2008 was \$204,874.
- There were 2,133 new residential permits issued between 2000 and 2008.
- There were 425 home sales in the City of McHenry in 2008.
- There are approximately 10,000 parcels in the City of McHenry.

Schooling Info:

- McHenry is served by one elementary school district and one high school district.
- Public: 6 elementary schools, 2 middle schools, and 2 high schools.
- Private: 3 elementary/middle schools, and 1 high school.



Edgebrook Elem. School, District 15

## HOUSING

**Average Home Sale Price (2008)**

Type	Price
2-Bedroom	\$146,361
3-Bedroom	\$199,140
4-Bedroom	\$269,122

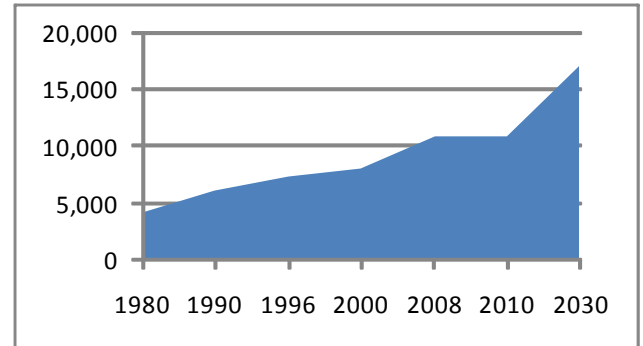
**Average Apartment Rent (2008)**

1 bed: \$700    2 bed: \$950

**Housing Growth  
1980 to 2010**

Year	Total Housing Units
1980	4,115
1990	6,171
1996	7,359
2000	8,127
2008	10,919 est.
2010	10,960 est.

City of McHenry Housing Units - 1980-2030



**Housing Type (2000)**

Type	Units	Percentage
Owner Occupied	6,009	76.3%
Renter Occupied	1,863	23.7%
Vacancies	255	3.1%
<b>Total</b>	<b>8,127</b>	<b>100%</b>

## INCOME & EDUCATION

**City of McHenry**

**Household Income (2000)**

Income	% of Total
\$14,999 & Under	7.7
\$15,000 to \$34,999	20.4
\$35,000 to \$49,999	14.8
\$50,000 to \$74,999	25.3
\$75,000 & Over	31.7

**Median Household Income (2005)**

City of McHenry	\$61,500
Nation	\$41,349

**Per Capita Family Income (2000)**

City of McHenry	\$23,272
State of Illinois	\$23,267
Nation	\$21,690

**City of McHenry-Educational Attainment (2000)**

Age 25+ Level	% of Total
Less Than 9th Grade	4.2
High School, No Diploma	8.6
High School Graduate	32.1
Some College, No Degree	26.4
Associates Degree	6.7
Bachelors Degree	16.3
Graduate Degree/Prof. Deg.	5.7

**School District Statistics (2007)**

Elementary District 15 (K-8)

Pupil Teacher Ratio	22.6:1
\$ Spent per Pupil	\$4,315

High School District 156 (9-12)

Pupil Teacher Ratio	20.0:1
\$ Spent per Pupil	\$5,538
Avg. ACT Score	20.0
% Graduated	93.5%
% Continuing to College	73.9%

## LABOR FORCE

### Available Labor Force (2008)

Counties	Total Unemployed
Boone (IL)	2,745
Cook (IL)	211,083
DeKalb (IL)	3,613
DuPage (IL)	23,752
Kane (IL)	17,424
Lake (IL)	24,505
McHenry (IL)	10,383

### City of McHenry Labor Force (2008)

Total employment: 182,331  
 Unemployed: 5.7%

### McHenry County Median Wages (2006)

Occupational Title	(Hourly Wage)	Occupational Title	(Hourly Wage)
General Office Clerk	\$11.06	Accountant	\$26.74
Salespersons, Retail	\$9.81	Registered Nurses	\$45.99
Cashiers	\$8.85	Drafters	\$16.95
Bartenders	\$6.82	Librarians	\$22.11
Pharmacy Technicians	\$11.89	Machinists	\$12.66
Child Care Workers	\$9.77	Automotive Mechanics	\$16.41
Recreation Workers	\$10.12	Carpenters	\$22.97
Hand Packers	\$10.92	Counselors	\$28.58
Cooks, Short Order	\$8.90	Mechanical Engineers	\$32.12
Cooks, Restaurant	\$8.21	Lawyers	\$39.36
Receptionists	\$9.85	Pharmacists	\$42.03
Nursing Aides	\$10.73	Cost Estimators	\$22.14
		Computer Programmer	\$24.63

### McHenry County Labor Force Categorization (2000) - Workers, 16+

Census Category	Total %
Agribusiness	0.33
Construction	9.7
Fin., Ins., & Real Estate	10.0
Government	2.1
Manufacturing	21.0
Mining	1.1
Retail Trade	13.4
Services	35.0
Trans., Com., & Utilities	8.5
Wholesale Trade	4.8



Medela, Inc.

McHenry is home to over 100 industrial firms, with many times that number in the area. Our largest employers include:

Centegra (NIMC)	1,050
Follett Library	700
Follett Software	700
Medela	400
Pioneer Center	250
Meyer Material	250
Fabrik Industries	250
City of McHenry	160
Family Services	133
Cunat	107
Gary Lang	98

### McHenry is located:

*55 miles northwest of the City of Chicago,*

*10 miles south of the Wisconsin border, and*

*65 miles southwest of the City of Milwaukee.*



### Travel Distances

City	Hwy. Miles
Atlanta	730
Chicago	55
Cleveland	343
Dallas	936
Denver	1,000
Kansas City	499
Los Angeles	2,095
Memphis	544
Milwaukee	65
Minneapolis	390
New Orleans	944
New York	840
St. Louis	335
Seattle	2,063

## TRANSPORTATION

### Major Roadways

Local	Interstate
IL 31 and IL 120	I-90 18 Mi. S
US 12 6 Mi. E	I-94 20 Mi. E
US 14 8 Mi. S	I-43 30 Mi. NW
IL 47 10 Mi. W	I-39 43 Mi. W
US 20 25 Mi. SW	I-80 76 Mi. S

### Public Transportation

METRA Commuter Trains to Chicago - UP Northwest Line  
 PACE Bus and Dial-A-Ride Service

### Airports

Commercial	
Chicago - O'Hare	42 Mi. SE
Milwaukee - Mitchell	57 Mi. NE
Greater Rockford	55 Mi. W

### Private

Galt	7 Mi. NW
Lake in the Hills	10 Mi. S

(Available charter, storage and maintenance services)

## PARKS AND RECREATION



Fox Ridge Park



Knox Park Pool



McHenry Zone Skate Park

- 35 local parks and playgrounds, consisting of 633 acres.
- State Parks: Glacier Park (2,800 ac.), Moraine Hills (1,700 ac.), and McHenry Dam.
- Boat launches on the Fox River and Chain O' Lakes.
- Municipal swimming pool.
- Lighted tennis courts.
- 24 McHenry County golf courses (17 public and 7 private).
- Special events and recreational programming for children and adults (preschool, dance, swimming, horseback riding, organized athletic leagues).
- McHenry County Prairie Trail (access to over 100 miles of trails for pedestrians, bicycling, rollerblading, and cross-country skiing, and including some areas for horseback riding and snowmobiles).
- Skate/bike park.



Veteran's Park, Downtown McHenry

## City of McHenry

333 S. Green Street  
 McHenry, IL 60050  
 Phone: (815) 363-2100  
 Fax: (815) 363-2119



McHenry Municipal Center

**Mayor Susan E. Low**  
 Alderman:  
 Ward 1: Vic Santi  
 Ward 2: Andrew Glab  
 Ward 3: Jeffrey Schaefer  
 Ward 4: Steven Murgatroyd  
 Ward 5: Richard Wimmer  
 Ward 6: Robert Peterson  
 Ward 7: Geri Condon  
 City Clerk: Janice Jones  
 Administrator: Doug Maxeiner

For additional information,  
 contact Douglas Martin.  
 (815) 363-2170.

## COMMUNITY FACILITIES

**City of McHenry Government**  
 Full-Time City Administrator.  
 Professional building department.  
 Public water and sanitary service.  
 160 full-time employees.  
 Budget FY08: \$40,703,865

**Police Department**  
 51 Sworn Officers.  
 2 Community Service Officer.  
 2.61 officers per 1,000 residents.  
 Budget FY08: \$7,735,331

**Fire Protection District**  
 151 Firefighters.  
 Class "4" Fire Insurance Rating.  
 Budget FY07: \$10,644,817

**McHenry Public Library District**  
 28,000 s.f. facility, with 80,000 items.

**McHenry County College**  
 60,000 students.  
 23 Associate Degree programs.  
 Center for Commerce and Econ. Dev. and ISO Training.

**Northern Illinois Medical Center**  
 Level II Trauma Center.  
 177-bed acute care facility.  
 325 physicians on staff.  
 State of the art heart center and Sage Cancer Center.



Centegra Northern Illinois Medical Center